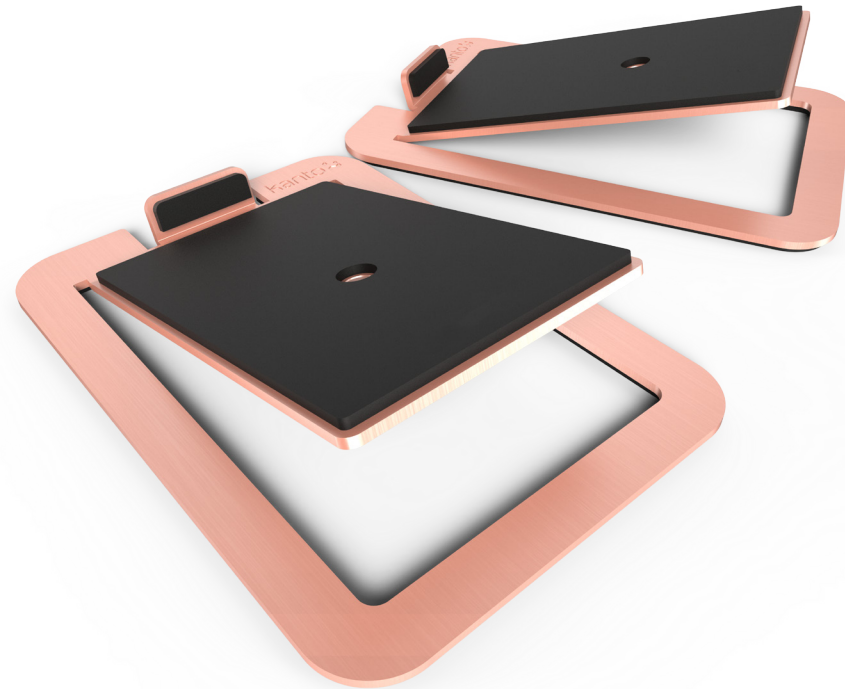


S4

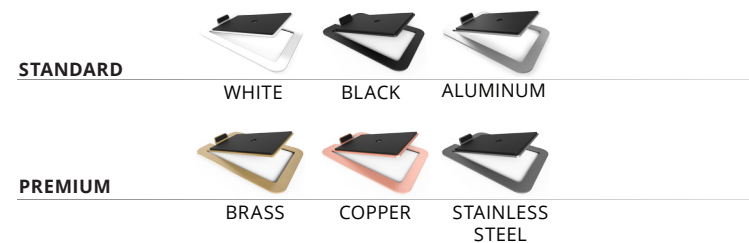
Step up to better sound.

S4 speaker stands are the perfect addition to your desktop speaker setup. With 16° of upward tilt, they ensure you experience the full range of frequencies your speakers have to offer. Each stand features foam padding to reduce vibration when you have the sound cranked up, and includes a mounting hole and 1/4"-20 screw to secure your YU4 or other compatible speakers in place. Choose between standard black or white finishes, or solid brass, copper, stainless steel and aluminum.



FEATURES & SPECIFICATIONS

- Low profile design
- 16° of upward tilt
- Foam isolation pads reduce undesirable resonance
- Constructed out of solid metal to reduce vibration
- Ideal for YU4 powered speakers
- Measures 5.5" wide by 7.9" deep
- Supports up to 8 pounds
- Gift box dimensions: 9.1" x 6.1" x 2.9" (23 cm x 15.5 cm x 7.3 cm)
- Product dimensions: 5.5" x 7.9" x 2" (14 x 20 x 5.1 cm)
- Product weight (pair):
 - S4: 2.8 lb (1.3 kg)
 - S4W: 2.8 lb (1.3 kg)
 - S4AL: 1.1 lb (0.5 kg)
 - S4BR: 2.8 lb (1.3 kg)
 - S4CU: 3.1 lb (1.4 kg)
 - S4SS: 2.6 lb (1.2 kg)

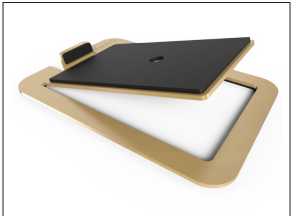


TECHNICAL ILLUSTRATIONS



16° ANGLE

Get the most out of your speakers by tilting them toward your ears, ensuring you never miss out on those higher frequencies.



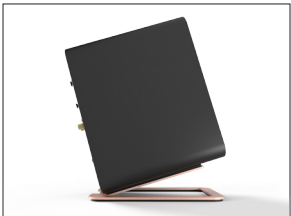
MOUNTING HOLE

Improve stabilization by securing YU4 or other compatible speakers in place with the provided 1/4"-20 screw.



FOAM PADDING

Foam padding on the top and bottom of each stand helps to maintain stability and reduce undesirable resonance.



MINIMALISTIC DESIGN

Using as little material as possible, S4's low-profile design keeps your desktop looking clean.



SOLID METAL

S4 is available in a variety of metals and alloys, making them extremely durable and resistant to vibration.

